

# Haunted Hill Farm®

Presents our ghoulish collection of Halloween décor from

## FRASER HILL FARM

Thank you for choosing Haunted Hill Farm!  
If you have any questions, concerns or suggestions, please  
contact us directly.

**Boo@HauntedHillFarm.com** (Anytime)

**1-888-840-4559**

(9AM to 9PM Eastern Time, Monday - Friday)

(9AM to 5PM Saturday - Sunday)

In the unlikely event that you experience a problem, please provide pictures and a description of the problem, a receipt (if available), name and address of the purchaser and the name of retailer where you purchased the product.

**Please do not return this item to the retailer.**

See the full Haunted Hill Farm collection and get online support for assembly, troubleshooting, care and maintenance at:

**[www.HauntedHillFarm.com](http://www.HauntedHillFarm.com)**

Please follow the step by step guide and enjoy your Looming Phantom!

HHLMPHNTM-1FLSA

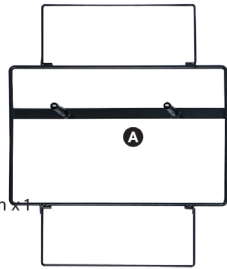


The model number of your item is printed on the side of your carton.  
Always use this number to identify your item.

Thank you for your purchase of this quality Halloween decor. With proper use and care, your Halloween decor will provide you with years of enjoyment. Please follow the instructions on how to assemble and disassemble your item. If you should have any problems with your item, or you have any questions, **DO NOT** return it to the place of purchase. Please call our toll-free number: **1-888-840-4559** and a customer service representative will assist you. Enjoy your Holiday!

## PARTS LIST

- A. Base x 1
  - B. Poles x 4
  - C. Lower Shroud x 1
  - D. Waist Frame x 1
  - E. Hip Hoop x 1
  - F. Chest Frame x 1
  - G. Head Frame x 1
  - H. Hooded Shroud x 1
  - I. Right Arm x 1
  - J. Right Hand with Barn Lantern x 1
  - K. Left Arm x 1
  - L. Left Hand x 1
  - M. Adapter x 1
- Input: 100-240V AC 50/60Hz  
Output: 5.9V 1.5A



**BEFORE ASSEMBLING, REMOVE ALL THE ABOVE PARTS FROM BOX. IF ANY PART IS MISSING, DO NOT ATTEMPT TO ASSEMBLE THE PRODUCT. CONTACT CUSTOMER SERVICE AT [BOO@HAUNTEDHILLFARM.COM](mailto:BOO@HAUNTEDHILLFARM.COM), OR BY PHONE FROM 9:00AM TO 5:00PM EST AT 1-888-840-4559.**

## CARE AND STORAGE INSTRUCTIONS

For best performance operate your item indoors. When not in use, store this product in its original packaging. Keep away from heat and moisture.

## WARNING

This item is not a toy and should be used for decoration only. This item contains small parts that can be a choking hazard. Keep all plastic and wire parts away from children. Recommended for ages 14 and up.

1. Please use the adapter supplied by manufacturer.
2. Please assemble item according to instructions. Connect all wires according to matching color.
3. Children should be supervised by adults. Item should not be grabbed, as it becomes a tipping hazard. Keep all away from the adapter, as it heats up during operation.
5. Colors, style and contents may vary slightly from those shown on the package.

# ASSEMBLY INSTRUCTIONS

## TWO OPTIONS

### 1 Standing

- Light up
- Sound
- Turns left and right

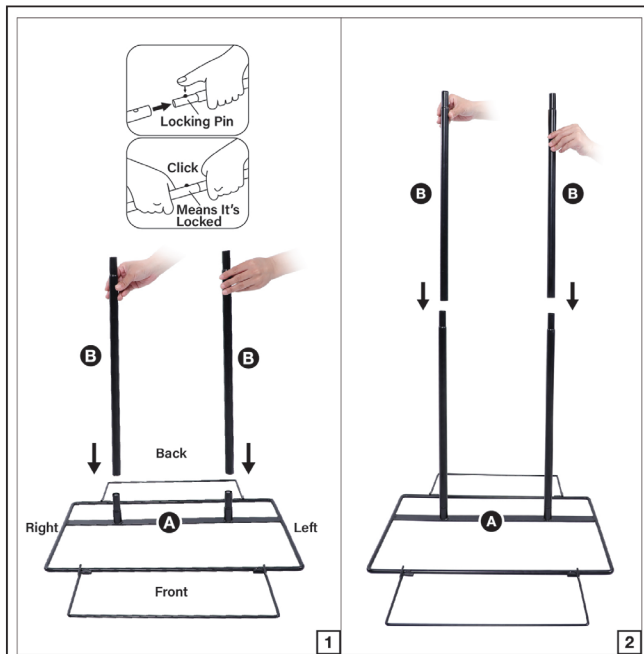


### 2 Hanging

- Light up
- Sound



## STANDING OPTION STEP 1 - STEP 8



### STEP 1

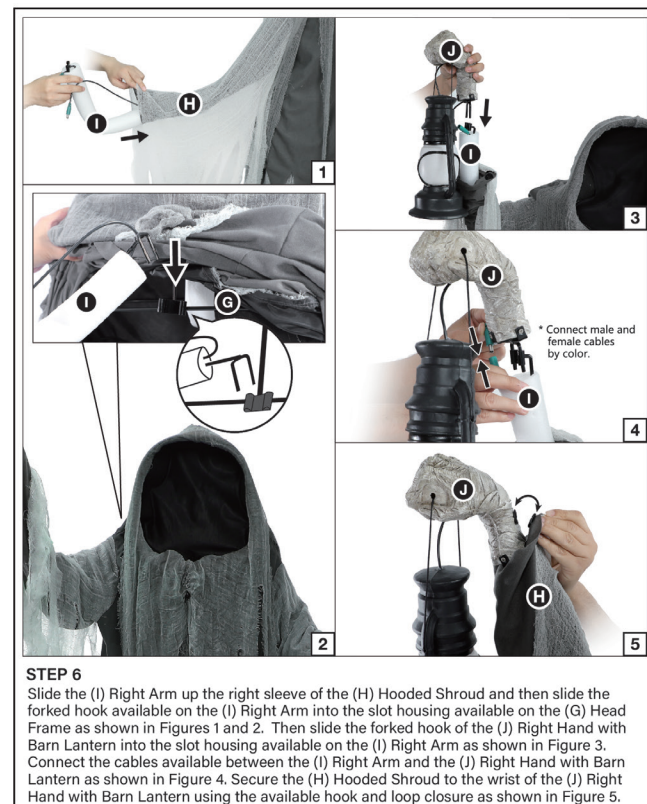
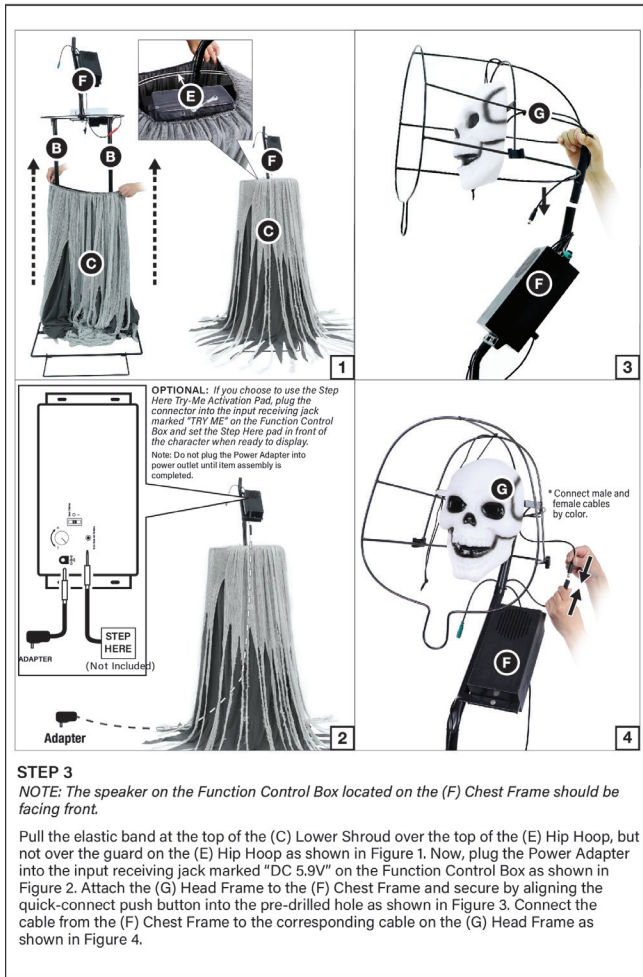
NOTE: Left and right are from the point of view of the character. The longer end of the (A) Base goes towards the front.

Assemble two of the (B) Poles to the (A) Base using the available quick connect push buttons and pre-drilled holes as shown in Figure 1. Then assemble the remaining (B) Poles to the previously assembled (B) Poles using the available quick connect push buttons and pre-drilled holes as shown in Figure 2.



### STEP 2

Lower the (C) Lower Shroud down over the (B) Poles. Assemble the (D) Waist Frame to the (B) Poles by using the quick-connect push buttons and pre-drilled holes. Slide the prongs of the (E) Hip Hoop through the slot housings on the top of the (D) Waist Frame as shown in Figure 1. Assemble the (F) Chest Frame onto the (D) Waist Frame and secure by aligning the quick-connect push button into the pre-drilled hole as shown in Figure 2. Connect the cable from the Function Control Box on the (F) Chest Frame to the corresponding cable on the (D) Waist Frame as shown in Figure 3.





**STEP 7**

Raise the (H) Hooded Shroud from the back, connect the cable from the (L) Right Arm to the corresponding cable on the (F) Torso Frame as shown in Figure 1. Secure the Sensor and the (H) Hooded Shroud with the hook and loop closures inside the (H) Hooded Shroud as shown in Figure 2.



**STEP 8**

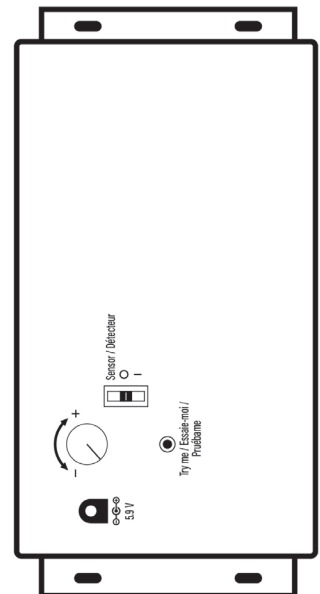
Straighten out and style the costume to your preference. Ensure that nothing is blocking the sensor before operation.

Your Looming Phantom is now fully assembled. Plug in and turn on to let the fun begin!

## OPERATING INSTRUCTION- STANDING

1. Plug the power adapter into a standard power outlet and adjust the settings on the Function Control Box, located on the Chest Frame, as desired.
2. Settings:

Sensor /Détecteur	This switch mode will activate lights, sound, and animation when the Infra-red (IR) sensor is activated and will operate for 1 audio-cycle with each activation. The Infra-red (IR) sensor has a range of up to 2 m/6.5 ft. and will activate when someone comes within an 80-degree angle from left-to-right, as well as from above and below.
○ /OFF	This switch mode either turns off the item or allows the item to be activated only if triggered by using a Step Here Pad (Not Included). The Item will operate for one audio cycle with each Try Me activation.
I / ON	This switch mode will continuously operate the lights, sound, and animation of the item.
⌚ +	Raise or lower the volume using the volume control turn dial, turn all the way down to turn the volume off .



# HANGING OPTION STEP 1 - STEP 5

**Locking Pin**  
Click  
Means It's Locked

**OPTIONAL:** If you choose to use the Step Here Try-Me Activation Pad, plug the connector into the input receiving jack marked "TRY ME" on the Function Control Box and set the Step Here pad in front of the character when ready to display.

*Note: Do not plug the Power Adapter into power outlet until item assembly is completed.*

**STEP 1**

NOTE: The speaker on the Function Control Box located on the (F) Chest Frame should be facing front. Connect the (G) Head Frame to the (F) Chest Frame using the available quick connect push button and pre-drilled hole as shown. Now, plug the Power Adapter into the input receiving jack marked "DC 5.9V" on the Function Control Box as shown in Figure 1. Inverse the (H) Hooded Shroud and then thread the string at the top of the (G) Head Frame through the hole available as shown in Figure 2. Then fit the hood 'opening' over the face position of (G) Head Frame as shown in Figure 3. Pull the (H) Hooded Shroud over the assembled frame and make sure the black fabric inside of the hood is pushed inwards as shown in Figure 4.

**STEP 2**

Using the string from the (G) Head Frame, hang the assembly from a sturdy location as shown in Figure 1. Slide the (K) Left Arm up the left sleeve of the (H) Hooded Shroud and then slide the forked hook available on the (K) Left Arm into the housing available on the (G) Head Frame as shown in Figures 2 and 3. Slide the forked hook of the (L) Left Hand into the slot housing available on the (K) Left Arm as shown in Figure 4. Secure the hook and loop closures between the sleeve of the (H) Hooded Shroud and the wrist of the (L)

**STEP 3**

Slide the (I) Right Arm up the right sleeve of the (H) Hooded Shroud and then slide the forked hook available on the (I) Right Arm into the slot housing available on the (G) Head Frame as shown in Figures 1 and 2. Then slide the forked hook of the (J) Right Hand with Barn Lantern into the slot housing available on the (I) Right Arm as shown in Figure 3. Connect the cables available between the (I) Right Arm and the (J) Right Hand with Barn Lantern as shown in Figure 4. Secure the (H) Hooded Shroud to the wrist of the (J) Right Hand with Barn Lantern using the available hook and loop closure as shown in Figure 5.

\* Connect male and female cables by color.

**STEP 4**

Raise the (H) Hooded Shroud from the back, connect the cable from the (I) Right Arm to the corresponding cable on the (F) Chest Frame. Connect the cable from the (I) Torso Frame to the corresponding cable on the (G) Head Frame as shown in Figure 1. Secure the Sensor and the (H) Hooded Shroud with the hook and loop closures inside the (H) Hooded Shroud as shown in Figure 2.

Sensor



**STEP 5**

Style the costume to your preference and ensure that nothing is blocking the Sensor.

Your Hanging Looming Phantom is now fully assembled. Plug in and turn on to let the fun begin!

## OPERATING INSTRUCTION - STANDING

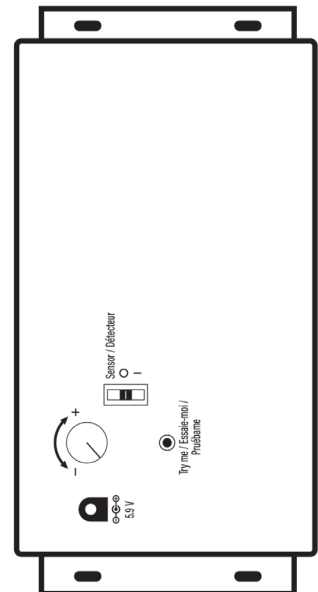
1. Plug the power adapter into a standard power outlet and adjust the settings on the Function Control Box, located on the Chest Frame, as desired.
2. Settings:

Sensor / Détecteur	This switch mode will activate the lights and sound of the item when the Infra-red (IR) sensor is activated and will operate for 1 audio-cycle with each activation. The Infra-red (IR) sensor has a range of up to 2 m/6.5 ft. and will activate when someone comes within an 80-degree angle from left-to-right, as well as from above and below.
<input type="radio"/> / OFF	This switch mode either turns off the item or allows the item to be activated only if triggered by using a Step Here Pad (Not Included). The Item will operate for one audio cycle with each Try Me activation.
<input type="checkbox"/> / ON	This switch mode will continuously operate the lights and sound of the item.
	Raise or lower the volume using the volume control turn dial, turn all the way down to turn the volume off .

This device complies with Part 15 of the FCC Rules. Operation is subject to the following two conditions: (1) This device may not cause harmful interference, and (2) this device must accept any interference received, including interference that may cause undesired operation.

**CAUTION:** Changes or modifications not expressly approved by the party responsible for compliance could void the user's authority to operate the equipment.

**NOTE:** This equipment has been tested and found to comply with the limits for a Class B digital device, pursuant to Part 15 of the FCC Rules. These limits are designed to provide reasonable protection against harmful interference in a residential installation. This equipment generates, uses and can radiate radio frequency energy and, if not installed and used in accordance with the instructions, may cause harmful interference to radio communications. However, there is no guarantee that interference will not occur in a particular installation. If this equipment does cause harmful interference to radio or television reception, which can be determined by turning the equipment off and on, the user is encouraged to try to correct the interference by one or more of the following measures: Reorient or relocate the receiving antenna. Increase the separation between the equipment and receiver. Connect the equipment into an outlet on a circuit different from that to which the receiver is connected. Consult the dealer or experienced radio/TV technician for help.





**SAFETY INSTRUCTIONS -SAVE THESE INSTRUCTIONS  
DANGER-TO REDUCE THE RISK OF FIRE OR ELECTRIC SHOCK  
CAREFULLY FOLLOW THESE INSTRUCTIONS**

The important safety instructions shall be provided with a power unit and include those items in the following list that are applicable. The statement **“READ AND FOLLOW ALL SAFETY INSTRUCTIONS”** shall be prominently displayed and precede the list, and the statement **“SAVE THESE INSTRUCTIONS”** shall be prominently displayed and follow the list. The word **“WARNING”** shall be entirely in upper case letters.

When using electrical products, basic precautions should always be practiced including the following:

**READ AND FOLLOW ALL SAFETY INSTRUCTIONS.**

Read and follow all instructions that are on the product or provided with the product.

For a cord-connected or direct plug-in power unit, do not use an extension cord.

Reference the National Electrical Code, NFPA 70, specifically for the installation of wiring and clearances from power and lighting conductors.

Installation work and electrical wiring must be done by qualified person(s) in accordance with all applicable codes and standards, including fire-rated construction.

For a cord-connected or direct plug-in power unit, do not install or use within 10 feet of a pool.

**WARNING:** Risk of Electric Shock. When used outdoors, install only to a covered Class A GFCI protected receptacle that is weatherproof with the power unit connected to the receptacle. If one is not provided, contact a qualified electrician for proper installation.

Ensure that the power unit and cord do not interfere with completely closing the receptacle cover.

**WARNING:** Risk of Fire. Installation involves special wiring methods to run wiring through a building structure. Consult a qualified electrician.

# IMPORTANT SAFETY INSTRUCTIONS



## Warnings

- This product is for decoration only and is not a toy. Small parts and choking hazard. Use caution with children under the age of 14.
- Do not position the decoration near candles, sources of heat, or in direct sunlight.
- The decoration cannot be connected to the power supply directly.
- Decoration should be on a level, stable surface to prevent it from falling over
- This product is fragile and should be assembled with care.
- Surface washable only.
- Please follow the steps and requirements specified in the instruction to ensure safety and reliability during the installation.

### **WARNING**

**DO NOT TURN ITEM ON UNTIL YOU HAVE COMPLETELY FINISHED ASSEMBLY.  
STAY CLEAR OF ITEM WHILE OPERATING.  
DO NOT PLACE ITEM ON UNEVEN GROUND.  
DO NOT PLACE WEIGHT ON ITEM WHILE IN OPERATION.**

**Storage tips:** We suggest saving the carton for storing your figurine. Store in a cool, dry area where the temperature does not exceed 100°F.

# 1-YEAR LIMITED WARRANTY

## "Limited" Warranty Program

For a period of one (1) year after purchase, Haunted Hill Farm ("Manufacturer") will either repair or replace defective components in accordance with this Limited Warranty.

**Sales and use taxes, plus shipping and handling charges are the responsibility of the consumer.**

This warranty is between Manufacturer and the original purchaser and is valid only when accompanied by the original purchaser's sales receipt showing original date of purchase and location of purchase. Replacements under this warranty revert back to the date of original purchase for future warranty.

Manufacturer or its authorized dealer can accept or reject warranty claims based on its findings. This warranty applies in normal residential use only, where an issue with the product is due to a defect in material or workmanship. Manufacturer can make substitutions as required of materials, components, and sub-components of comparable value and utility. This warranty is limited to product repair or replacement (to be determined solely by Manufacturer). Warranty return is limited to only the single affected component.

This warranty covers only manufacturing defects and does not cover normal wear and tear, abuse or misuse, including: water damage, chemical damage, exposure to extreme heat or cold, abrasion or excessive weight. This product is intended to be used with standard ornaments only. This warranty is invalid if the product is not used for intended purpose. Manufacturer disclaims liability for any aspect of installation and any inconvenience caused by a defective part or component.

**Certain items are not covered by this warranty. These include, but are not limited to the following:**

1. Components subjected to abuse, including abuse intended to simulate failure.
2. Damages caused by retailer, shipper or installation crew (such as scratches, dents, tears, etc.).
3. Any part which merely exhibits normal wear yet functions essentially as new, including stretching of materials and stitching.
4. Tears, punctures, scratches or any damage caused by improper installation or use.
5. Items sold "as is" or floor models.

To make a claim, send a copy of the original sales receipt along with a brief description of the problem to the email address below. Please include your email address and daytime telephone or cell phone #. All items maybe charged actual freight and handling costs. Repairs or replacement will be made at the Manufacturer's option.

**THIS IS THE ENTIRE EXCLUSIVE EXPRESS LIMITED LIABILITY. THE MANUFACTURER NEITHER MAKES NOR IS RESPONSIBLE FOR ANY OTHER WARRANTIES, EITHER EXPRESS OR IMPLIED, INCLUDING THOSE OF RETAILING DEALERS. THIS EXCLUSIVE REMEDY IS LIMITED TO RECEIPT OF A CREDIT IN CONNECTION WITH THE REPAIR OR REPLACEMENT OF ANY PRODUCT OR COMPONENT DEEMED TO BE DEFECTIVE UNDER THE TERMS AND CONDITIONS AS STATED IN THIS WARRANTY. NEITHER HAUNTED HILL FARM, THE PRODUCT MANUFACTURER NOR ITS AGENTS SHALL BE LIABLE IN ANY CASE FOR INCIDENTAL, INDIRECT, SPECIAL OR CONSEQUENTIAL DAMAGES RESULTING FROM THE USE OF THIS PRODUCT OR ARISING OUT OF ANY BREACH OF THIS WARRANTY OR NEGLIGENCE EVEN IF IT HAS BEEN ADVISED OF THE POSSIBILITY OF SUCH DAMAGES. EXCEPT AS OTHERWISE MAY BE REQUIRED BY LAW, THERE ARE NO OTHER EXPRESS OR IMPLIED WARRANTIES OTHER THAN THE WARRANTY DESCRIBED HEREIN, AND ALL OTHER WARRANTIES, INCLUDING ANY IMPLIED WARRANTY OF MERCHANTABILITY OR FITNESS FOR A PARTICULAR PURPOSE ARE EXPRESSLY DISCLAIMED.**

**Boo@HauntedHillFarm.com**